

# IAC Sound-absorbing panels

IAC Sound-absorbing plates are an A-class sound absorber with great possibilities. Its different sizes, shapes, thicknesses and finishes can be easily combined to create colorful and vibrant walls that at the same time improve the sound environment of the room. IAC Sound-absorbing panels can be installed in any direction thanks to the simple installation method. The thick absorbers (104 mm) provide superior attenuation of low-frequency sounds (around 125 Hz), which have a negative impact on health.



## Installation

Square IAC Sound-absorbing panels are installed close to the wall using keyhole fastening. Other forms are installed with 5 mm distance to the wall with Velcro.



## Format



### Plank

150x300x29  
150x300x54  
150x300x79  
150x300x104

150x600x29  
150x600x54  
150x600x79  
150x600x104

150x1200x29  
150x1200x54  
150x1200x79



### Rectangle

1200x600x54  
1200x600x79  
1200x600x104

1200x975x54  
1200x975x104  
  
1800x1200x54  
1800x1200x104



### Square

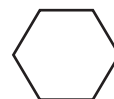
600x600x29  
600x600x54  
600x600x79  
600x600x104

1200x1200x54  
1200x1200x104



### Triangle

600x600x29  
600x600x54  
600x600x79  
600x600x104



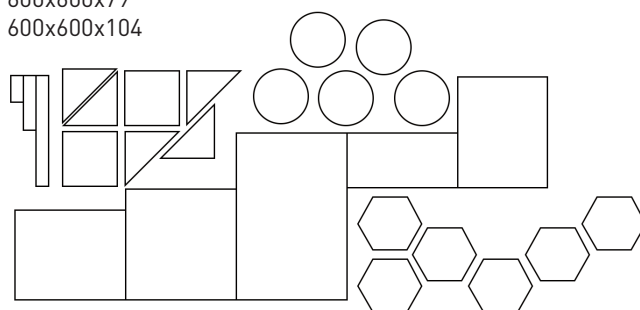
### Hexagon

580x500x53



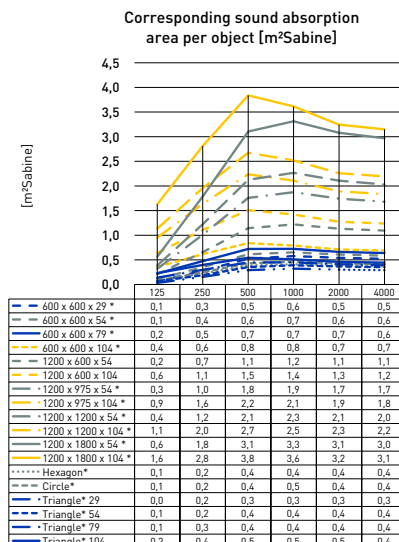
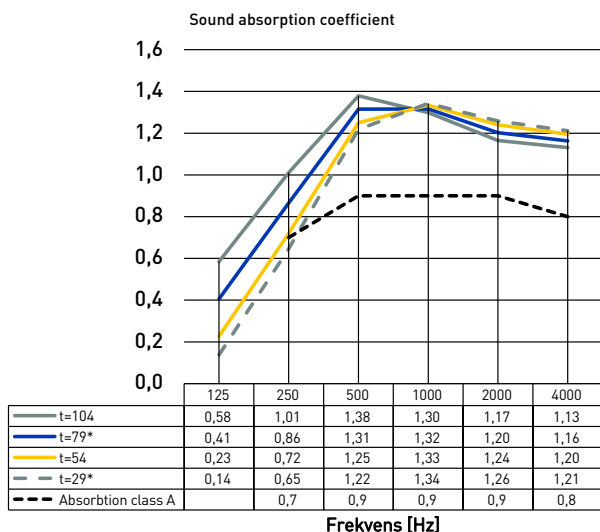
### Circle

Ø565x53



## Absorption

The product is manufactured with a sound-absorbing core material that meets absorption class A according to ISO 354 (room method) and ISO 11654 (classification) when installed close to the substrate.



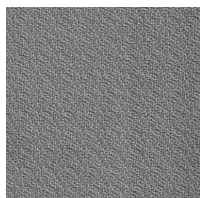
The diagram shows sound absorption coefficient with format 1200x600x54 (0.91 m<sup>2</sup> /object).

For calculation of other formats, see below.

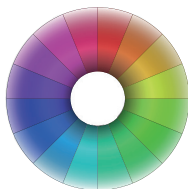
600x600x29	<b>0,43</b>	Hexagon	<b>0,31</b>
600x600x54	<b>0,49</b>	Circle	<b>0,34</b>
600x600x79	<b>0,55</b>		
600x600x104	<b>0,61</b>	Plank:	
1200x600x54	<b>0,91</b>	150x300x29	<b>0,07</b>
1200x600x104	<b>1,09</b>	150x300x54	<b>0,09</b>
1200x975x54	<b>1,40</b>	150x300x79	<b>0,12</b>
1200x975x104	<b>1,62</b>	150x300x104	<b>0,14</b>
1200x1200x54	<b>1,70</b>	150x600x29	<b>0,13</b>
1200x1200x10	<b>1,94</b>	150x600x54	<b>0,17</b>
1200x1800x54	<b>2,48</b>	150x600x79	<b>0,21</b>
1200x1800x10	<b>2,78</b>	150x600x104	<b>0,25</b>
Triangle t=29	<b>0,24</b>	150x1200x29	<b>0,26</b>
Triangle t=54	<b>0,29</b>	150x1200x54	<b>0,33</b>
Triangle t=79	<b>0,34</b>	150x1200x79	<b>0,39</b>
Triangle t=104	<b>0,39</b>	150x1200x104	<b>0,46</b>

## Material

- ◇ Stone wool core of high density
- ◇ Concealed absorbent polyester edge reinforcement
- ◇ Back of MDF
- ◇ Surface layer of Trevira fabric, design fabric or printed image with optional motif
- ◇ Fabric-covered sides with sewn-on corners



Close-up of surface layer



Available in 28 colours

Values in the diagram show sound absorption area per object for an absorbent in format 1200x600x54, with a roof covering area of approx. 40%.

\*Calculated values

## Environment & durability

- ◇ Easy to move and reassemble if needed
- ◇ Reusable core via Rewool
- ◇ Sunda Hus, rating B
- ◇ The Trevira fabric is approved according to Oeko Tex® Standard 100

## Fire resistance

- ◇ Core: A1 (Euroclass)
- ◇ Surface layer: B1 (DIN-4102)
- ◇ Hidden edge: B-s1, d0 (Euroclass)

## Emissions

- ◇ Core emissions in indoor climate: M1

## Cleaning

- ◇ Possible to vacuum with a soft nozzle, brush with a dry, soft brush and wipe with a well-wrung cloth or sponge.

## Bestilling

IAC sound-absorbing panel, selected format, thickness and color.

Example: IAC sound-absorbing panel, 1200x1200x104 mm, 6013 Yellow.